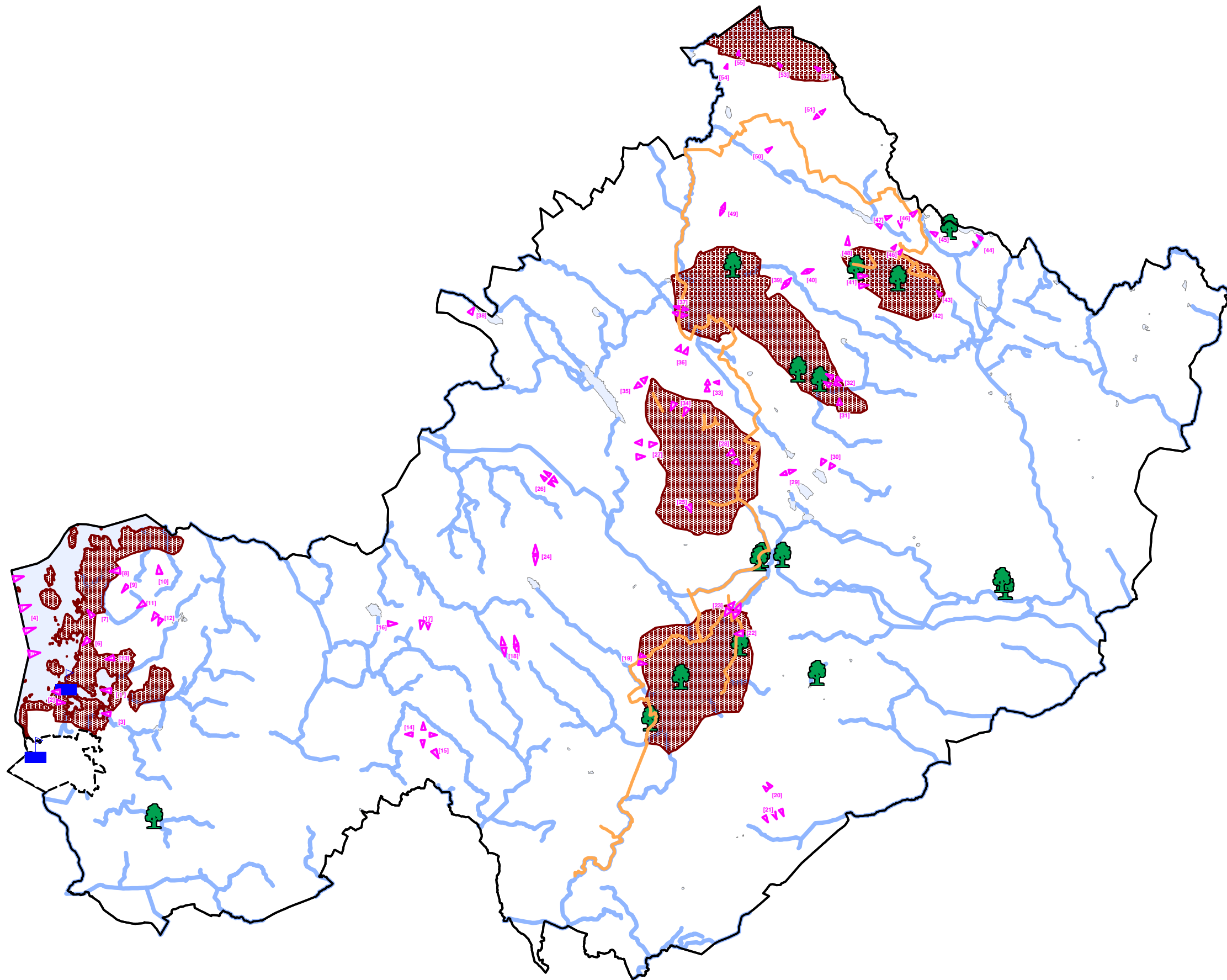



SEA MAPS

- 
- 1 AMENITY & LANDSCAPE MAP
- 2 CULTURE & HERITAGE MAP
- 3 FLOOD RISK MAP
- 4 GENERAL VULNERABILITIES MAP
- 5 GROUNDWATER VULNERABILITIES MAP
- 6 LAKE VULNERABILITIES MAP
- 7 MATERIAL ASSETS MAP
- 8 NATURAL HERITAGE & HABITAT MAP
- 9 POPULATION DISTRIBUTION MAP
- 10 RIVER VULNERABILITIES MAP



**STRATEGIC ENVIRONMENTAL ASSESSMENT
ENVIRONMENTAL REPORT FOR
WESTMEATH COUNTY DEVELOPMENT PLAN 2008-2014
AMENITY AND LANDSCAPE MAP**

LEGEND

-  WALKING ROUTES
-  BATHING WATERS
-  HIGH AMENITY AREAS
-  PROTECTED VIEWS
-  TREE PRESERVATION ORDERS
-  ATHLONE TOWN COUNCIL
ADMINISTRATIVE AREA



NOTE: DETAILS SHOWN ON THIS MAP ARE FOR INFORMATION PURPOSES ONLY. FURTHER DETAILS ON ANY ITEM SHOULD BE CLARIFIED WITH WESTMEATH COUNTY COUNCIL.

THIS MAP HAS BEEN PRODUCED BY WESTMEATH COUNTY COUNCIL WITH AVAILABLE LOCAL AUTHORITY AND ORDNANCE SURVEY BASE DATA.

© ORDNANCE SURVEY IRELAND, LICENCE NO. WESTMEATH CCMA 9802
NOTE: UNAUGHTHORISED REPRODUCTION OF THIS MAP INFRINGES STATE COPYRIGHT.

SCALES ON THIS MAP ARE AT LEAST +/-3% OF STATED SCALE.










CONTACT:
THE PLANNING DEPARTMENT
WESTMEATH COUNTY COUNCIL
COUNTY BUILDING
MOUNT ST.,
MULLINGAR, CO WESTMEATH

PHONE: 044-9332000
FAX: 044-9335231

STRATEGIC ENVIRONMENTAL ASSESSMENT ENVIRONMENTAL REPORT FOR WESTMEATH COUNTY DEVELOPMENT PLAN 2008-2014 CULTURAL HERITAGE MAP



LEGEND

-  LAKES
-  NATIONAL MOUNUMENTS IN STATE CARE
-  RECORDED MONUMENTS
-  ARCHAEOLOGICAL ZONES OF POTENTIAL
-  PROTECTED STRUCTURES
-  FORE SPECIAL HERITAGE AREA
-  UISNEACH
-  KILBIXY
-  ATHLONE TOWN COUNCIL ADMINISTRATIVE AREA



NOTE: DETAILS SHOWN ON THIS MAP ARE FOR INFORMATION PURPOSES ONLY. FURTHER DETAILS ON ANY ITEM SHOULD BE CLARIFIED WITH WESTMEATH COUNTY COUNCIL.

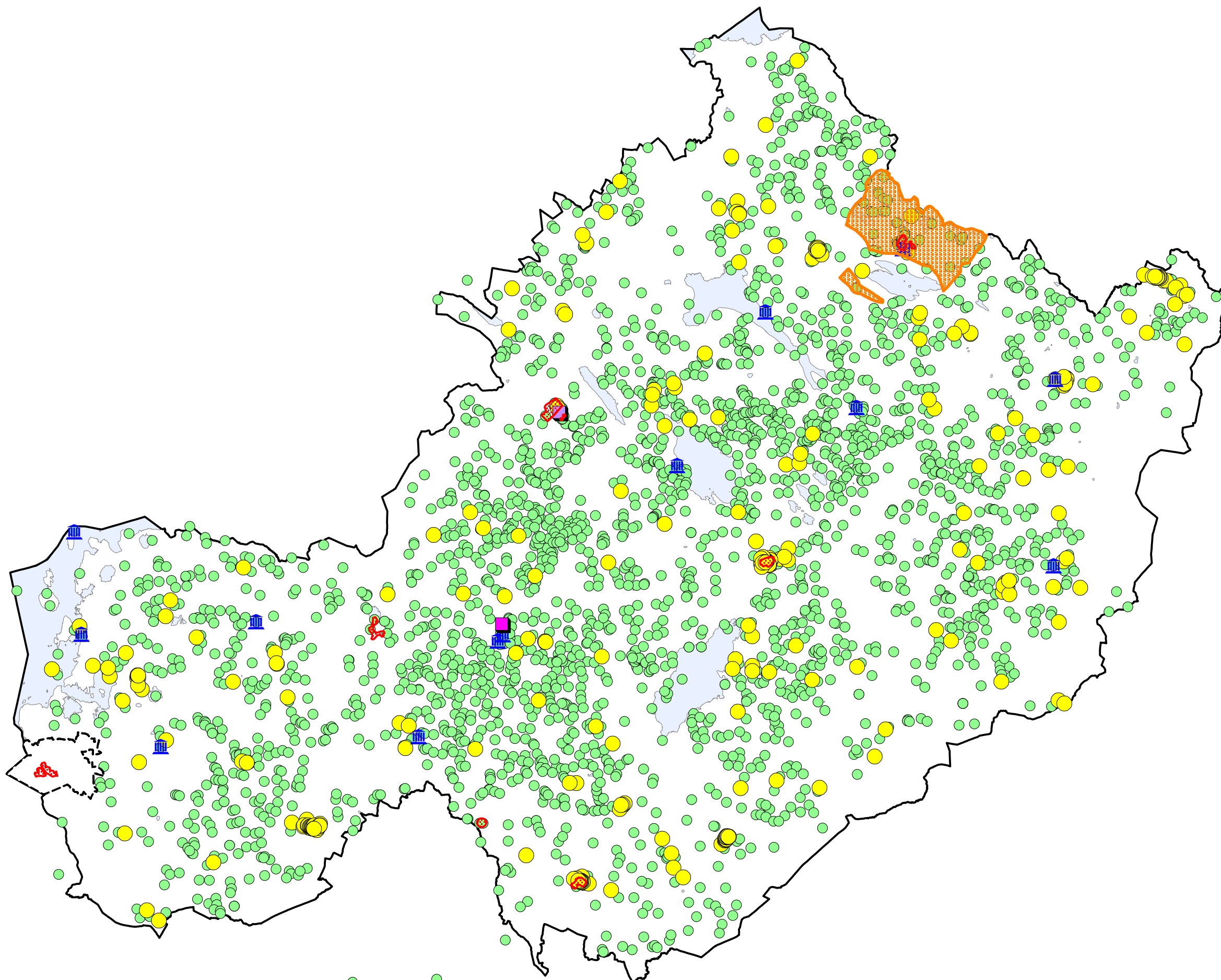
THIS MAP HAS BEEN PRODUCED BY WESTMEATH COUNTY COUNCIL WITH AVAILABLE LOCAL AUTHORITY AND ORDNANCE SURVEY BASE DATA.

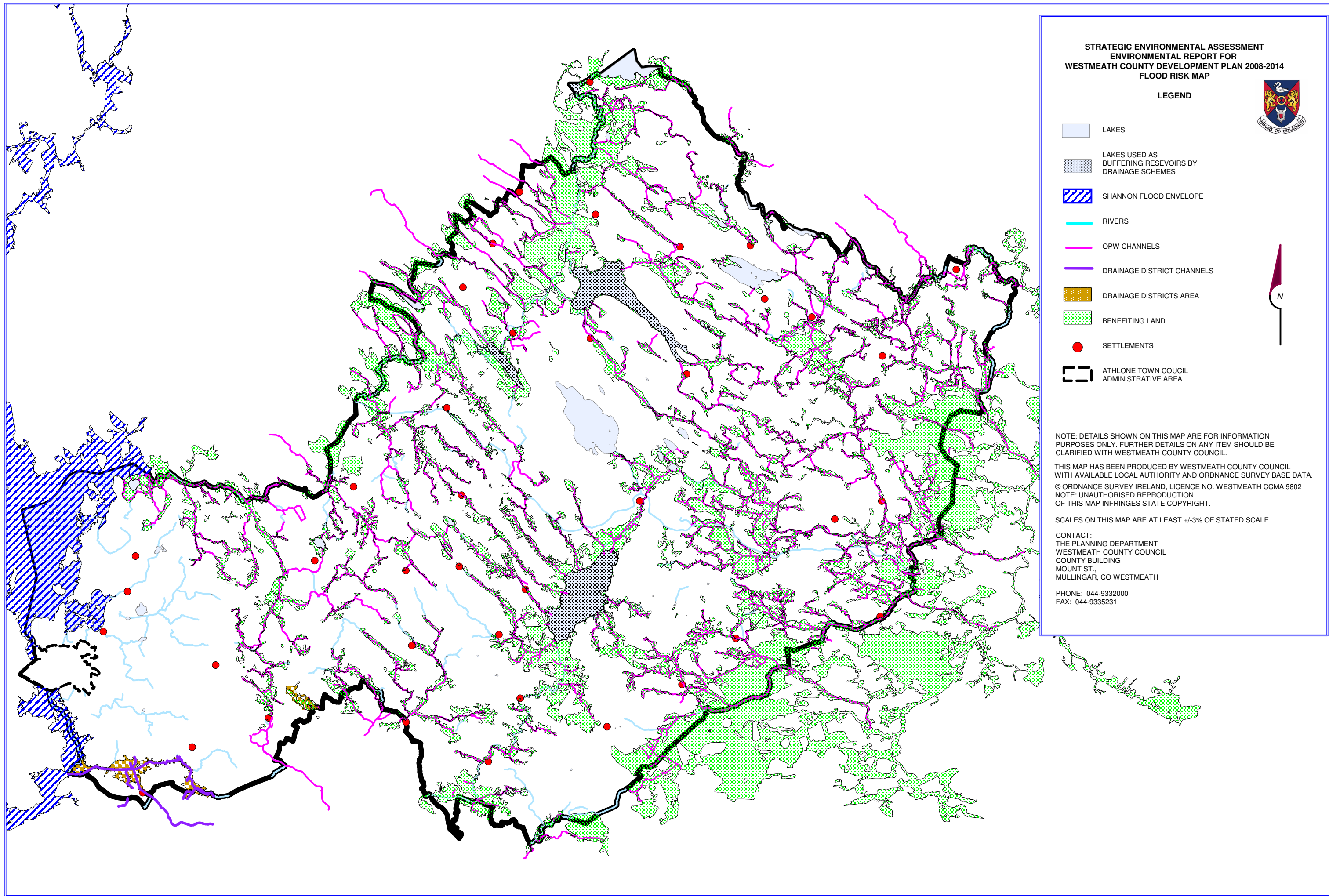
© ORDNANCE SURVEY IRELAND, LICENCE NO. WESTMEATH CCMA 9802
NOTE: UNAUTHORISED REPRODUCTION OF THIS MAP INFRINGES STATE COPYRIGHT.

SCALES ON THIS MAP ARE AT LEAST +/-3% OF STATED SCALE.

CONTACT:
THE PLANNING DEPARTMENT
WESTMEATH COUNTY COUNCIL
COUNTY BUILDING
MOUNT ST.,
MULLINGAR, CO WESTMEATH

PHONE: 044-9332000
FAX: 044-9335231





STRATEGIC ENVIRONMENTAL ASSESSMENT
ENVIRONMENTAL REPORT FOR
WESTMEATH COUNTY DEVELOPMENT PLAN 2008-2014
FLOOD RISK MAP



LEGEND

- LAKES
- LAKES USED AS BUFFERING RESEVOIRS BY DRAINAGE SCHEMES
- SHANNON FLOOD ENVELOPE
- RIVERS
- OPW CHANNELS
- DRAINAGE DISTRICT CHANNELS
- DRAINAGE DISTRICTS AREA
- BENEFITING LAND
- SETTLEMENTS
- ATHLONE TOWN COUCL ADMINISTRATIVE AREA



NOTE: DETAILS SHOWN ON THIS MAP ARE FOR INFORMATION PURPOSES ONLY. FURTHER DETAILS ON ANY ITEM SHOULD BE CLARIFIED WITH WESTMEATH COUNTY COUNCIL.

THIS MAP HAS BEEN PRODUCED BY WESTMEATH COUNTY COUNCIL WITH AVAILABLE LOCAL AUTHORITY AND ORDNANCE SURVEY BASE DATA.

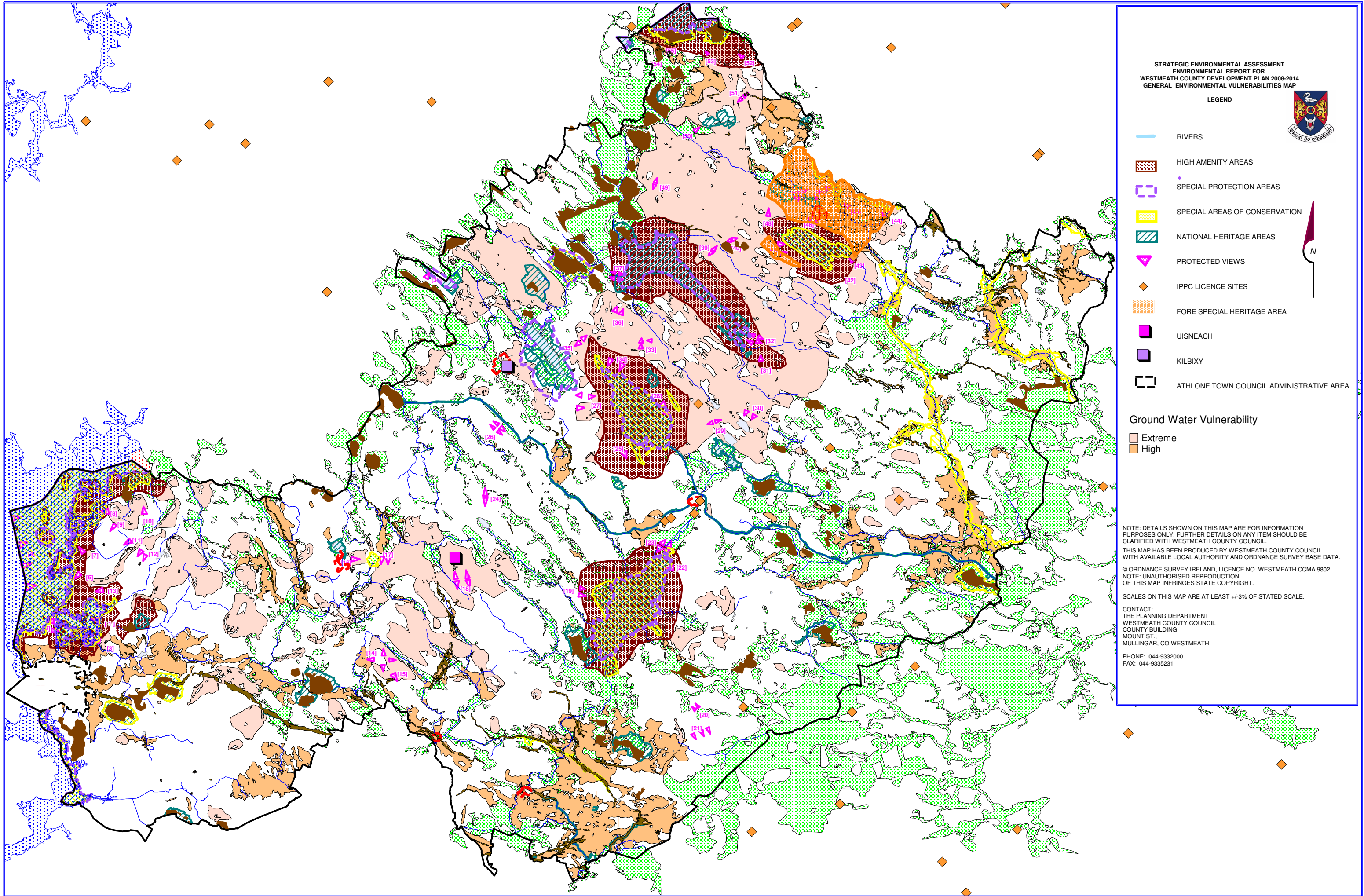
© ORDNANCE SURVEY IRELAND, LICENCE NO. WESTMEATH CCMA 9802

NOTE: UNAUTHORISED REPRODUCTION OF THIS MAP INFRINGES STATE COPYRIGHT.

SCALES ON THIS MAP ARE AT LEAST +/-3% OF STATED SCALE.

CONTACT:
THE PLANNING DEPARTMENT
WESTMEATH COUNTY COUNCIL
COUNTY BUILDING
MOUNT ST.,
MULLINGAR, CO WESTMEATH

PHONE: 044-9332000
FAX: 044-9335231



STRATEGIC ENVIRONMENTAL ASSESSMENT
ENVIRONMENTAL REPORT FOR
WESTMEATH COUNTY DEVELOPMENT PLAN 2008-2014
GENERAL ENVIRONMENTAL VULNERABILITIES MAP

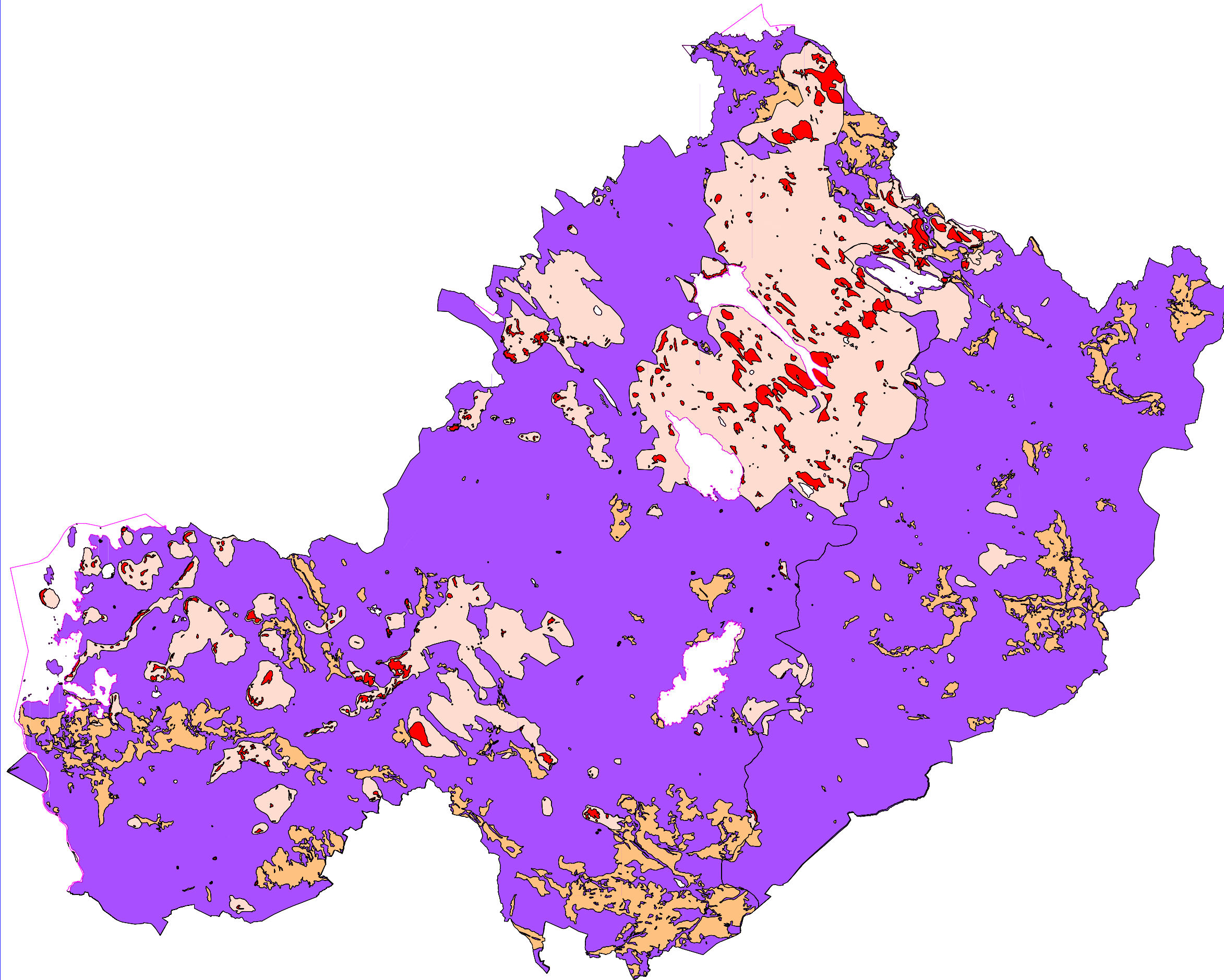
LEGEND

- RIVERS
- HIGH AMENITY AREAS
- SPECIAL PROTECTION AREAS
- SPECIAL AREAS OF CONSERVATION
- NATIONAL HERITAGE AREAS
- PROTECTED VIEWS
- IPPC LICENCE SITES
- FORE SPECIAL HERITAGE AREA
- UISNEACH
- KILBIXY
- ATHLONE TOWN COUNCIL ADMINISTRATIVE AREA

Ground Water Vulnerability

- Extreme
- High

NOTE: DETAILS SHOWN ON THIS MAP ARE FOR INFORMATION PURPOSES ONLY. FURTHER DETAILS ON ANY ITEM SHOULD BE CLARIFIED WITH WESTMEATH COUNTY COUNCIL.
THIS MAP HAS BEEN PRODUCED BY WESTMEATH COUNTY COUNCIL WITH AVAILABLE LOCAL AUTHORITY AND ORDNANCE SURVEY BASE DATA.
© ORDNANCE SURVEY IRELAND, LICENCE NO. WESTMEATH COMA 9802
NOTE: UNAUTHORISED REPRODUCTION OF THIS MAP INFRINGES STATE COPYRIGHT.
SCALES ON THIS MAP ARE AT LEAST +/-3% OF STATED SCALE.
CONTACT:
THE PLANNING DEPARTMENT
WESTMEATH COUNTY COUNCIL
COUNTY BUILDING
MOUNT ST.,
MULLINGAR, CO WESTMEATH
PHONE: 044-9332000
FAX: 044-9335231



STRATEGIC ENVIRONMENTAL ASSESSMENT
ENVIRONMENTAL REPORT FOR
WESTMEATH COUNTY DEVELOPMENT PLAN 2008-2014
GROUNDWATER VULNERABILITY MAP



LEGEND

■ Extreme (Rock near Surface or Karst)	(613)
■ Extreme	(453)
■ High	(551)
■ Unclassified	(1465)
■ Water	(202)

NOTE: DETAILS SHOWN ON THIS MAP ARE FOR INFORMATION PURPOSES ONLY. FURTHER DETAILS ON ANY ITEM SHOULD BE CLARIFIED WITH WESTMEATH COUNTY COUNCIL.

THIS MAP HAS BEEN PRODUCED BY WESTMEATH COUNTY COUNCIL WITH AVAILABLE LOCAL AUTHORITY AND ORDINANCE SURVEY BASE DATA.

© ORDINANCE SURVEY IRELAND LICENCE NUMBER WESTMEATH CCMA 9802
NOTE: UNAUTHORISED REPRODUCTION OF THIS MAP INFRINGES STATE COPYRIGHT.
SCALES ON THIS MAP ARE AT LEAST $\pm 3\%$ OF STATED SCALE.

CONTACT
THE PLANNING DEPARTMENT
WESTMEATH COUNTY COUNCIL
COUNTY BUILDING
MOUNT STREET
MULLINGAR CO WESTMEATH

PHONE: 044-9332000
FAX: 044-9335231

STRATEGIC ENVIRONMENTAL ASSESSMENT
ENVIRONMENTAL REPORT FOR
WESTMEATH COUNTY DEVELOPMENT PLAN 2008-2014
LAKE VULNERABILITY MAP
(Lake water bodies that are at risk of failing to meet the objectives of the WFD)

LEGEND



- Significant Risk
- Probably at Significant Risk
- Probably not at Significant Risk
- Not at Significant Risk
- Rivers
- Main Settlements
- County Boundary



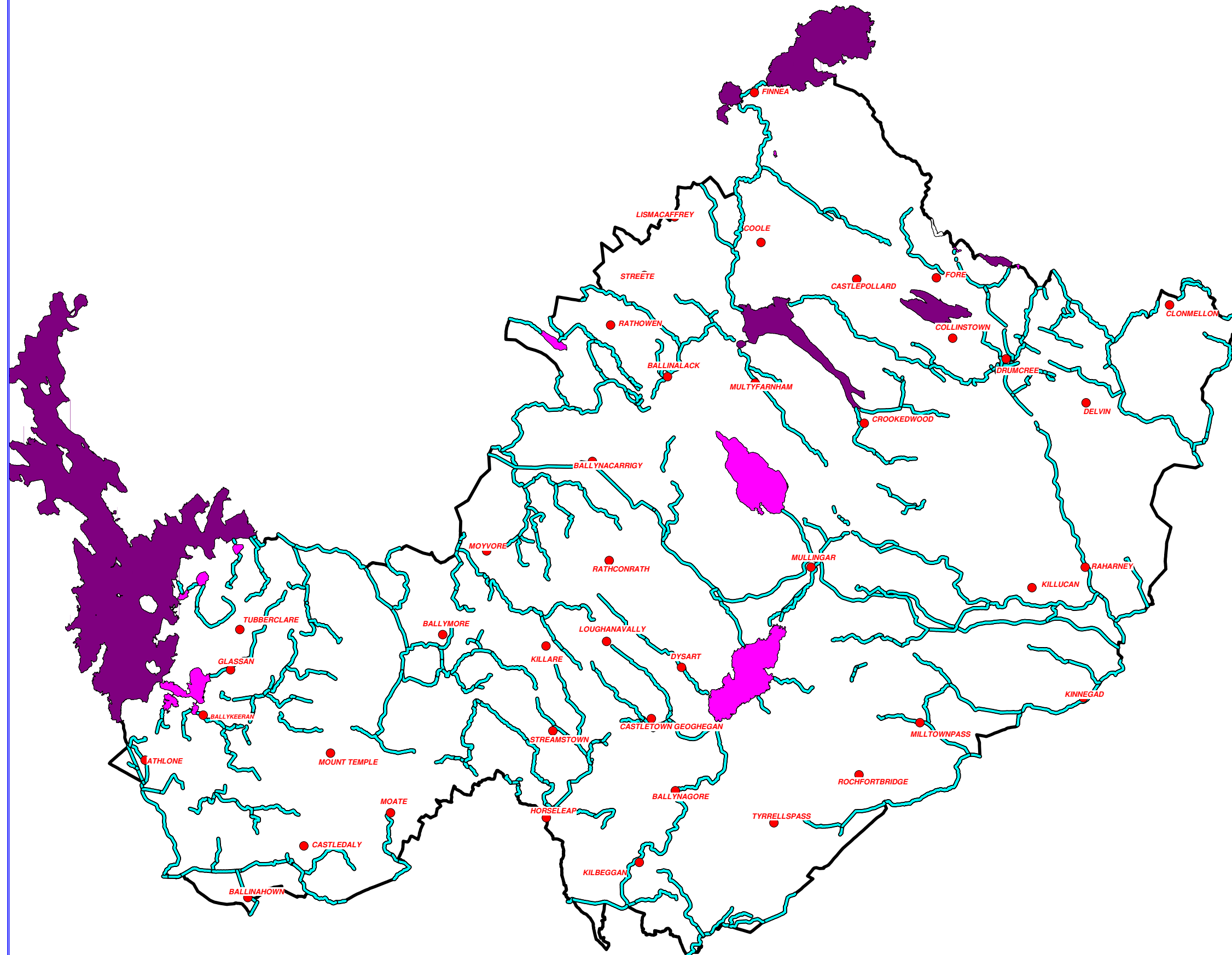
NOTE: DETAILS SHOWN ON THIS MAP ARE FOR INFORMATION PURPOSES ONLY. FURTHER DETAILS ON ANY ITEM SHOULD BE CLARIFIED WITH WESTMEATH COUNTY COUNCIL.

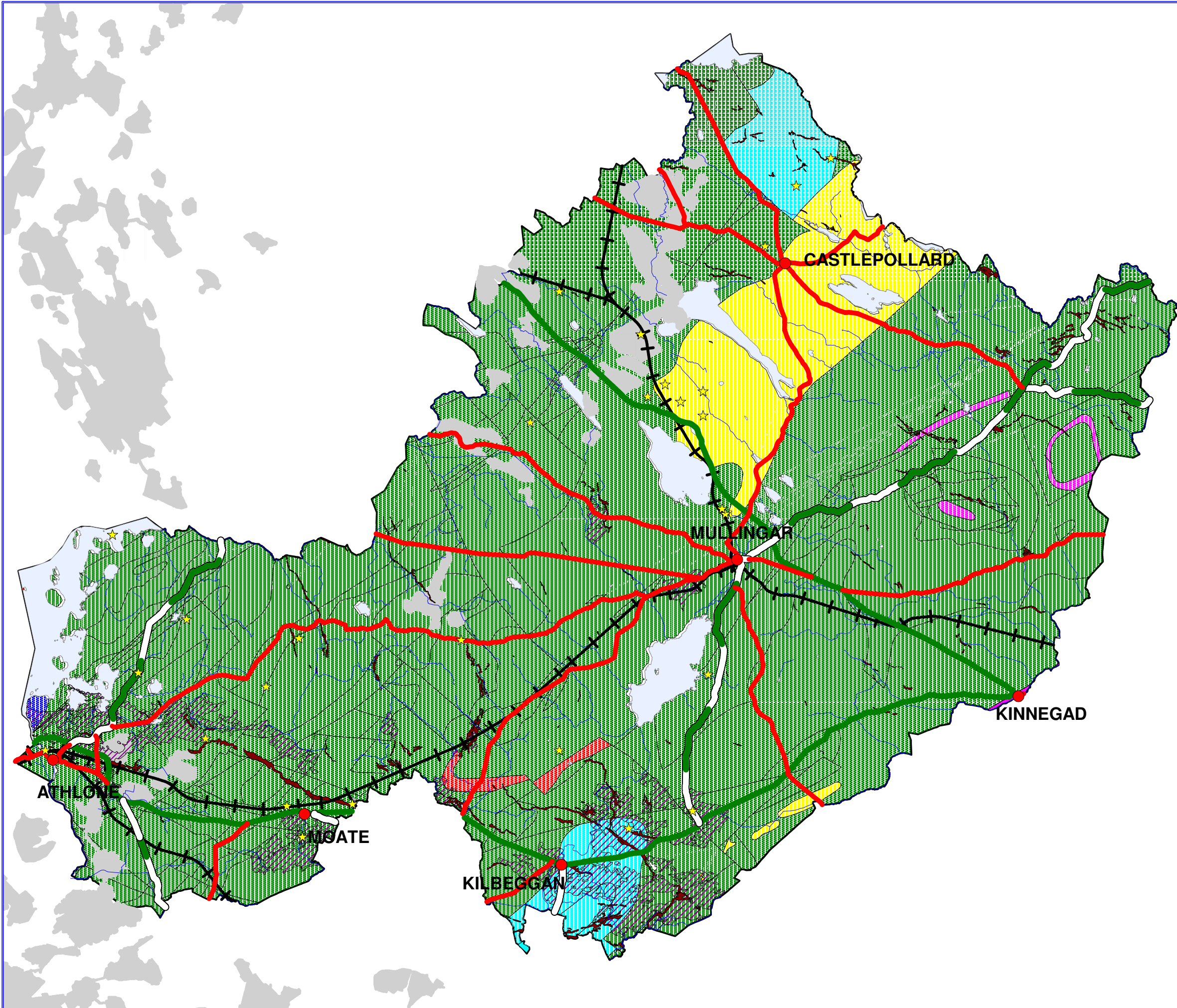
THIS MAP HAS BEEN PRODUCED BY WESTMEATH COUNTY COUNCIL WITH AVAILABLE LOCAL AUTHORITY AND ORDNANCE SURVEY BASE DATA.
© ORDNANCE SURVEY IRELAND, LICENCE NO. WESTMEATH CCMA 9802
NOTE: UNAUTHORISED REPRODUCTION OF THIS MAP INFRINGES STATE COPYRIGHT.

SCALES ON THIS MAP ARE AT LEAST +/-3% OF STATED SCALE.

CONTACT:
THE PLANNING DEPARTMENT
WESTMEATH COUNTY COUNCIL
COUNTY BUILDING
MOUNT ST.,
MULLINGAR, CO WESTMEATH

PHONE: 044-9332000
FAX: 044-9335231





STRATEGIC ENVIRONMENTAL ASSESSMENT
ENVIRONMENTAL REPORT FOR
WESTMEATH COUNTY DEVELOPMENT PLAN 2008-2014
MATERIAL ASSETS MAP
LEGEND



- PEAT AREAS
- LAKES
- RIVERS
- ESKERS
- WATER ABSTRACTION POINTS
- NATIONAL PRIMARY ROAD
- NATIONAL SECONDARY ROAD
- REGIONAL ROADS
- MAIN TOWNS
- RAILWAY
- ATHLONE TOWN COUNCIL ADMINISTRATIVE AREA



AQUIFERS:

- GRAVEL AQUIFER
- REGIONALLY IMPORTANT KARSTIFIED BEDROCK AQUIFER
- REGIONALLY IMPORTANT KARSTIFIED AQUIFER
- PRODUCTIVE FRACTURED BEDROCK AQUIFER (LOCALLY IMPORTANT)
- MODERATELY PRODUCTIVE BEDROCK AQUIFER (LOCALLY IMPORTANT)
- BED AQUIFER - PENDING CLASSIFICATION
- POORLY PRODUCTIVE BEDROCK AQUIFER

NOTE: DETAILS SHOWN ON THIS MAP ARE FOR INFORMATION PURPOSES ONLY. FURTHER DETAILS ON ANY ITEM SHOULD BE CLARIFIED WITH WESTMEATH COUNTY COUNCIL.

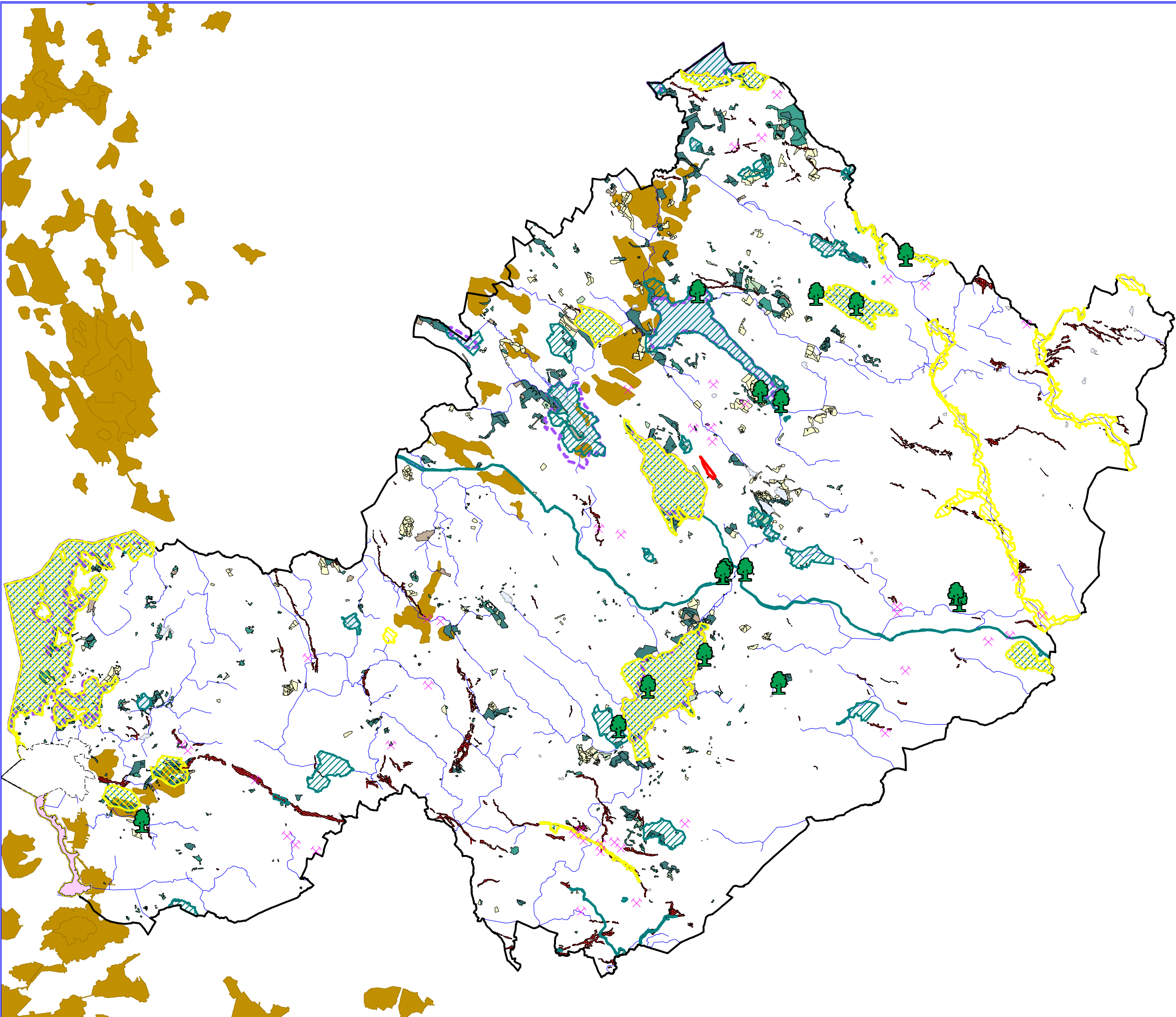
THIS MAP HAS BEEN PRODUCED BY WESTMEATH COUNTY COUNCIL WITH AVAILABLE LOCAL AUTHORITY AND ORDNANCE SURVEY BASE DATA.

© ORDNANCE SURVEY IRELAND, LICENCE NO. WESTMEATH CCMA 9802
NOTE: UNAUTHORISED REPRODUCTION OF THIS MAP INFRINGES STATE COPYRIGHT.

SCALES ON THIS MAP ARE AT LEAST +/-3% OF STATED SCALE.

CONTACT:
THE PLANNING DEPARTMENT
WESTMEATH COUNTY COUNCIL
COUNTY BUILDING
MOUNT ST.,
MULLINGAR, CO WESTMEATH

PHONE: 044-9332000
FAX: 044-9335231



STRATEGIC ENVIRONMENTAL ASSESSMENT
ENVIRONMENTAL REPORT FOR
WESTMEATH COUNTY DEVELOPMENT PLAN 2008-2014
NATURAL HERITAGE AND HABITAT MAP



LEGEND

- NATURAL HERITAGE AREAS
- SPECIAL PROTECTION AREA
- SPECIAL AREA OF CONSERVATION
- RIVERS
- LAKES
- ESKERS
- SCRAGH BOG NATURE RESERVE
- PEATLANDS
- CALLOWS
- BROADLEAF
- CONIFER
- MIXED
- PROTECTED TREES
- QUARRIES
- ATHLONE TOWN COUNCIL ADMINISTRATIVE AREA



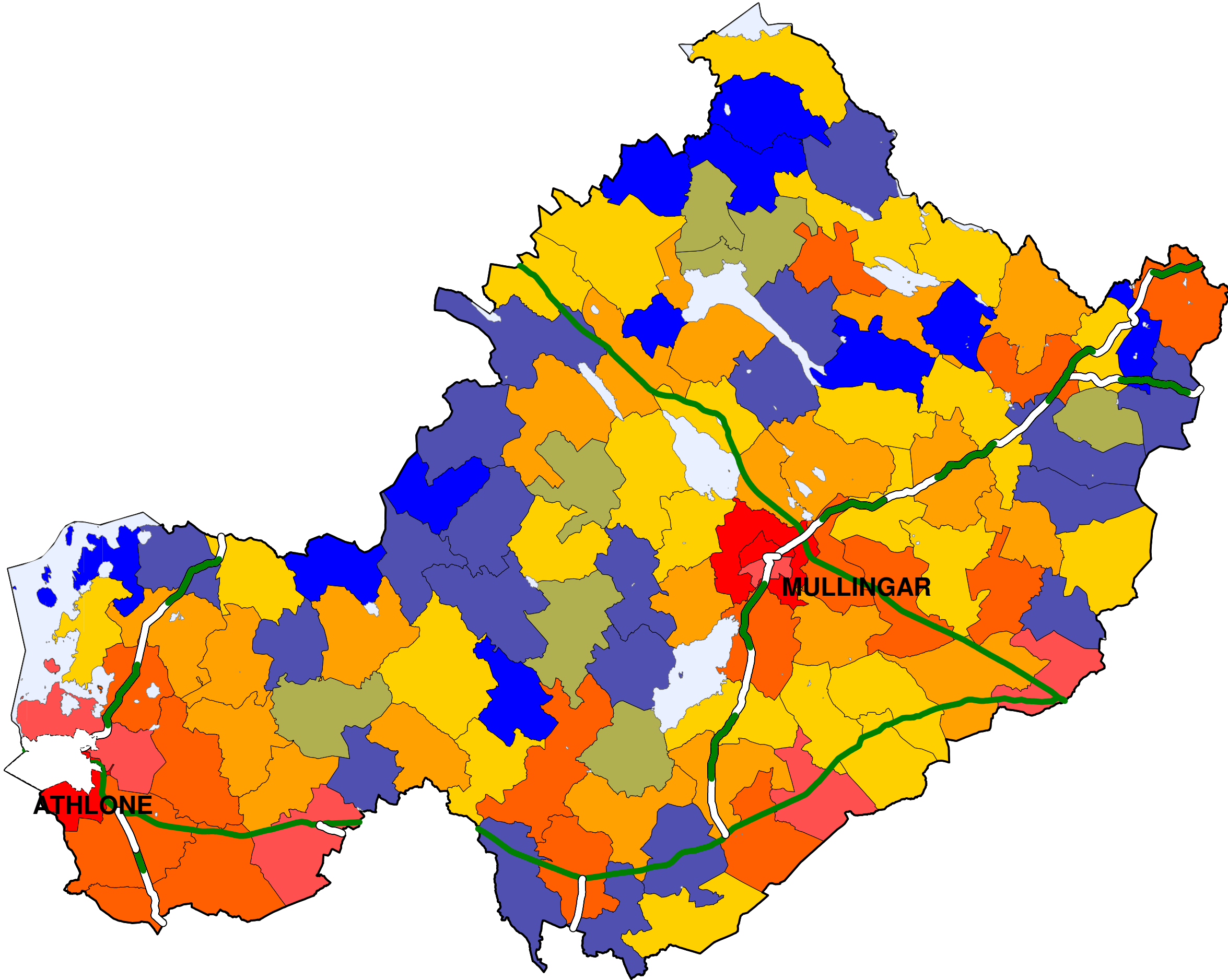
NOTE: DETAILS SHOWN ON THIS MAP ARE FOR INFORMATION PURPOSES ONLY. FURTHER DETAILS ON ANY ITEM SHOULD BE CLARIFIED WITH WESTMEATH COUNTY COUNCIL.

THIS MAP HAS BEEN PRODUCED BY WESTMEATH COUNTY COUNCIL WITH AVAILABLE LOCAL AUTHORITY AND ORDNANCE SURVEY BASE DATA.

© ORDNANCE SURVEY IRELAND, LICENCE NO. WESTMEATH CCMA 9802
NOTE: UNAUTHORISED REPRODUCTION OF THIS MAP INFRINGES STATE COPYRIGHT.
SCALES ON THIS MAP ARE AT LEAST +/-3% OF STATED SCALE.

CONTACT:
THE PLANNING DEPARTMENT
WESTMEATH COUNTY COUNCIL
COUNTY BUILDING
MOUNT ST.
MULLINGAR, CO WESTMEATH

PHONE: 044-9332000
FAX: 044-9335231



STRATEGIC ENVIRONMENTAL ASSESSMENT
ENVIRONMENTAL REPORT FOR
WESTMEATH COUNTY DEVELOPMENT PLAN 2008-2014
POPULATION DISTRIBUTION PER ELECTROAL DISTRICT MAP

LEGEND

- NATIONAL PRIMARY ROADS
- NATIONAL SECONDARY ROADS
- LAKES
- ATHLONE TOWN COUNCIL ADMINISTRATIVE AREA



- 5,320 to 9,580
- 1,690 to 5,320
- 660 to 1,690
- 410 to 660
- 300 to 410
- 260 to 300
- 180 to 260
- 70 to 180

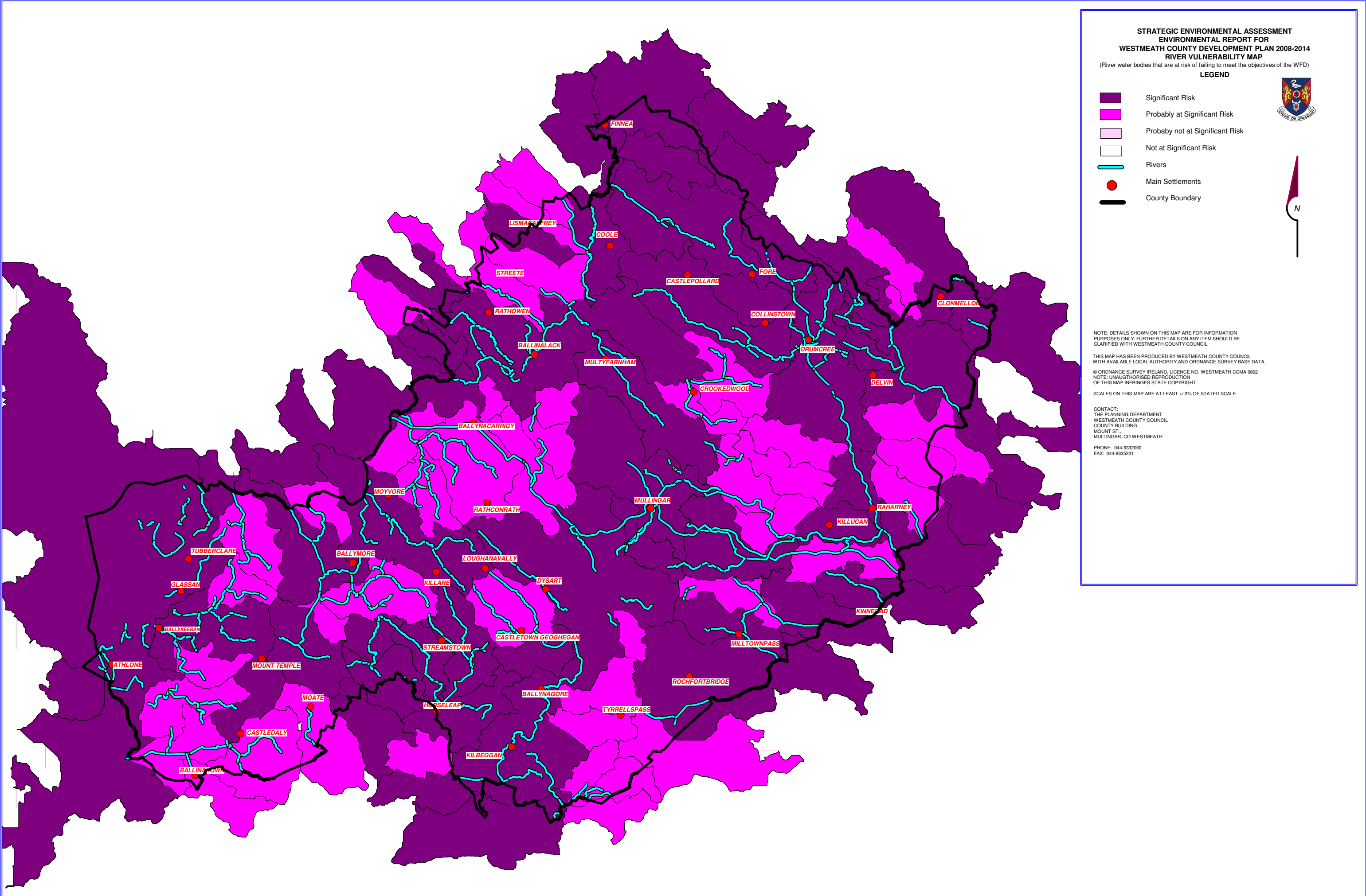
NOTE: DETAILS SHOWN ON THIS MAP ARE FOR INFORMATION PURPOSES ONLY. FURTHER DETAILS ON ANY ITEM SHOULD BE CLARIFIED WITH WESTMEATH COUNTY COUNCIL.

THIS MAP HAS BEEN PRODUCED BY WESTMEATH COUNTY COUNCIL WITH AVAILABLE LOCAL AUTHORITY AND ORDINANCE SURVEY BASE DATA.

© ORDINANCE SURVEY IRELAND LICENCE NUMBER WESTMEATH CMA 9802
NOTE: UNAUTHORISED REPRODUCTION OF THIS MAP INFRINGES STATE COPYRIGHT.
SCALES ON THIS MAP ARE AT LEAST +/- 3% OF STATED SCALE.

CONTACT
THE PLANNING DEPARTMENT
WESTMEATH COUNTY COUNCIL
COUNTY BUILDING
MOUNT STREET,
MULLINGAR CO WESTMEATH



PHONE: 044-9332000
FAX: 044-9335231



STRATEGIC ENVIRONMENTAL ASSESSMENT
ENVIRONMENTAL REPORT FOR
WESTMEATH COUNTY DEVELOPMENT PLAN 2008-2014
RIVER VULNERABILITY MAP
(River water bodies that are at risk of failing to meet the objectives of the WFD)

LEGEND

	Significant Risk
	Probably at Significant Risk
	Probably not at Significant Risk
	Not at Significant Risk
	Rivers
	Main Settlements
	County Boundary

NOTE: DETAILS SHOWN ON THIS MAP ARE FOR INFORMATION PURPOSES ONLY. FURTHER DETAILS ON ANY ITEM SHOULD BE CLARIFIED WITH WESTMEATH COUNTY COUNCIL.

THIS MAP HAS BEEN PRODUCED BY WESTMEATH COUNTY COUNCIL WITH AVAILABLE LOCAL AUTHORITY AND ORDNANCE SURVEY BASE DATA.

© ORDNANCE SURVEY IRELAND, LICENCE NO. WESTMEATH CCMA 9802
NOTE: UNAUTHORISED REPRODUCTION OF THIS MAP INFRINGES STATE COPYRIGHT.

SCALES ON THIS MAP ARE AT LEAST +/-3% OF STATED SCALE.

CONTACT:
THE PLANNING DEPARTMENT
WESTMEATH COUNTY COUNCIL
COUNTY BUILDING
MOUNT ST.
MULLINGAR, CO WESTMEATH
PHONE: 044-9332000
FAX: 044-9335231