



**CASTLEPOLLARD**  
**ENTERPRISE CENTRE**  
OPENING OUR DOORS TO YOU

**APPLICATION FORMS AVAILABLE FROM**

Community & Enterprise Section,  
Westmeath County Council,  
County Buildings, Mullingar.

Tel: 044 9332137 Fax: 044 9342330

e-mail: [mstenson@westmeathcoco.ie](mailto:mstenson@westmeathcoco.ie)

## LOCATION

Located to the North of the County, Castlepollard is an attractive town that has enjoyed steady population growth over the years to a current level of 1,004, representing 12% growth in the period 2002-2006. The town is located at the intersection of the R394, R395 and R195 routes, which link the region to other urban centres, including Mullingar just 20km to the south.



Status	Local Service Town
Population	1,004
Growth (1996-2006)	13%
Main Access Routes	R394/R395/R195
Broadband Availability	Wireless/Satellite
No. of Primary Schools	4
No. of Secondary Schools	1
Nearby Third Level Institutes	Athlone, Maynooth

## ECONOMIC OVERVIEW

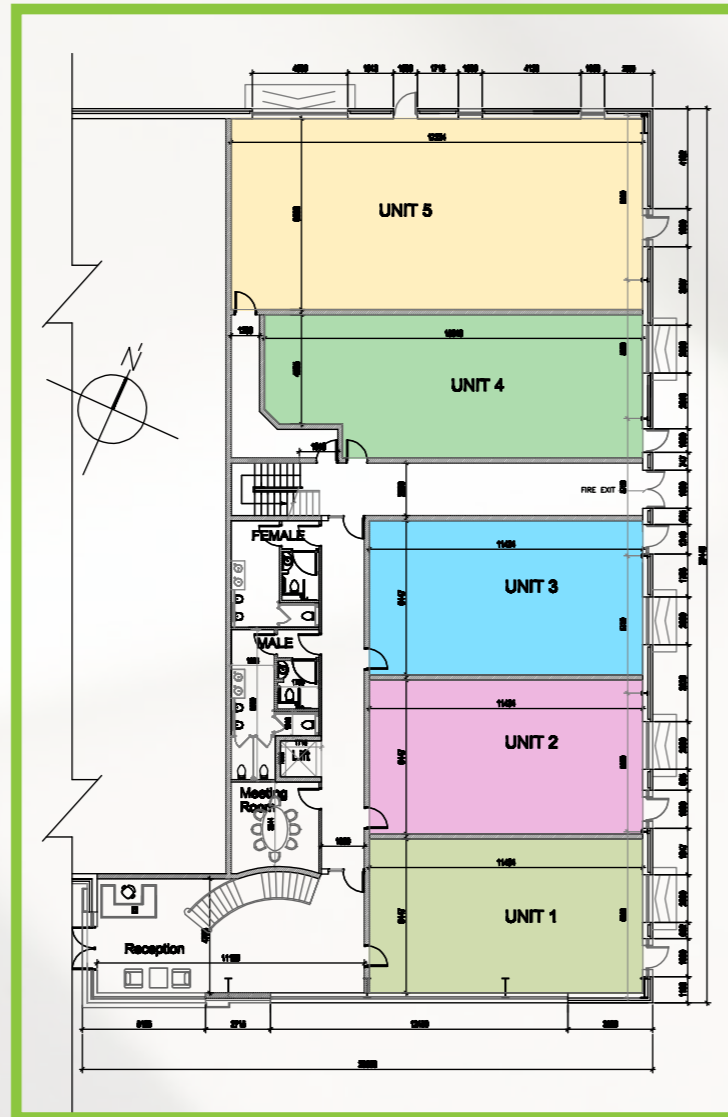
There are 49 acres of land zoned for Enterprise and Employment in the Castlepollard area.

Important employers in the town include **Mergon International** - an injection moulding company, **Maple Court Nursing Home** and additionally, **Iralco** - Aluminium/Stainless Steel, located in nearby Collinstown.

An important addition to the town that will service a wide catchment from a retail perspective is the development of a new retail centre in the town.

## Floor Plan of Units

### Ground Floor



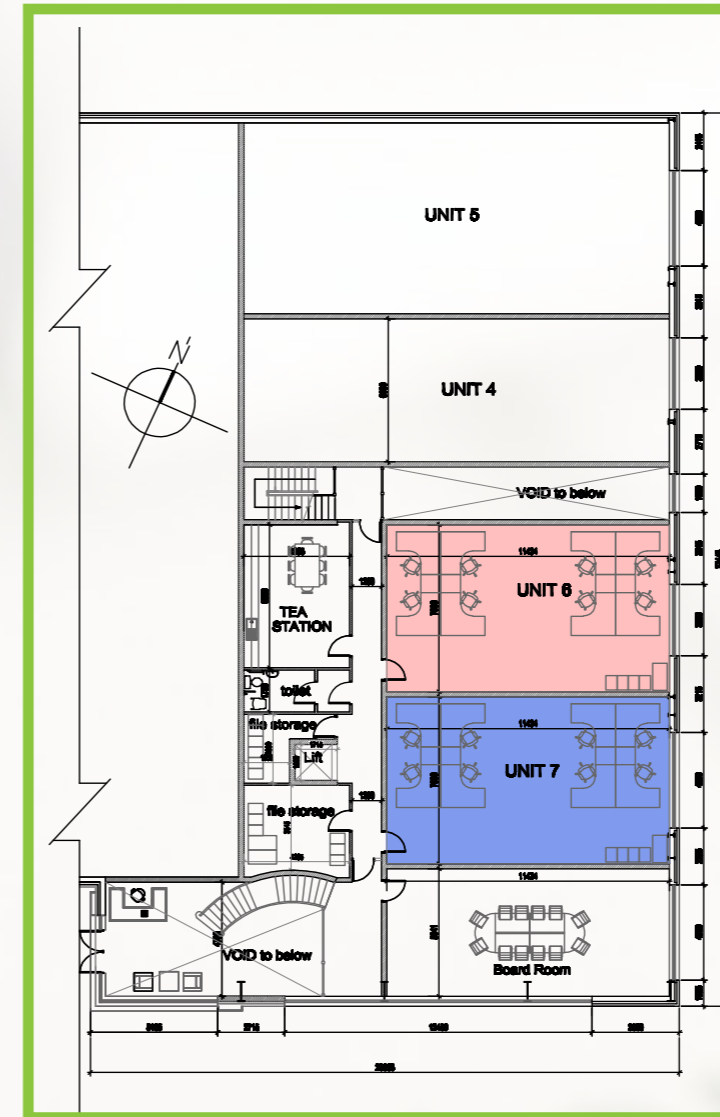
### GROUND FLOOR PLAN

(Not to Scale) Area: 657.86 Sq. meters / 7079 Sq.feet  
Total Area: 985.86 Sq.meters / 10608 Sq.feet

### UNIT AREA

UNIT NO. 1	UNIT NO. 2	UNIT NO. 3	UNIT NO. 4
74 Sq. meters / 796 Sq. feet	74 Sq. meters / 796 Sq. feet	74 Sq. meters / 796 Sq. feet	90 Sq. meters / 968 Sq. feet

### First Floor



### FIRST FLOOR PLAN

(Not to Scale) Area: 328 Sq. meters / 3529 Sq.feet  
Total Area: 985.86 Sq.meters / 10608 Sq.feet

UNIT NO. 5	UNIT NO. 6	UNIT NO. 7
138 Sq. meters / 1485 Sq. feet	80 Sq. meters / 861 Sq. feet	80 Sq. meters / 861 Sq. feet

### MISCELLANEOUS

Meeting Room	Board Room
13.5 Sq. meters / 145 Sq. feet	61 Sq. meters / 656.36 Sq. f

## BROADBAND

Broadband is available via DSL (Eircom), Mobile, Wireless and Satellite providers and according to the official website, [www.broadband.gov.ie](http://www.broadband.gov.ie) the following BSP's may operate in the region, (subject to survey):

- **Mobile:** 3 Ireland, O2 Ireland.
- **Wireless:** Last Mile Broadband,
- **Satellite:** Applied Solutions, Avonline, Broadband Wherever, Cross Country Broadband Ltd., Digiweb Satellite, e3 Broadband, ehotspot, Eircom Satellite, Fastnet Broadband Satellite, Media Satellite Ireland Ltd., National Broadband Ltd., Orbitlink, Pure Telecom satellite, Satellite Broadband Ireland.

## EDUCATION, SOCIAL AND CULTURAL ASPECTS

The town has four primary schools and one secondary school serving a wide catchment, with nearby third level institutes located in Athlone and Maynooth.

From a tourism perspective, Tullyally Castle and Gardens one of Irelands oldest castles is located near the town, whilst Fore Abbey associated with the Seven Wonders of Fore - an ancient Monastic Site dating back to the 7th Century A.D., is also located nearby.

## EXTERNAL DETAILS

- 3 phase ESB to units 1 to 5.
- 1 phase supply to units 6 and 7
- Mains water supply
- Mains foul.
- Attenuation system for control of storm water
- Tarmacadam roadways and marked car parking
- External street and car park lighting
- Roller Shutter Door access to all ground Floor units

## SERVICES INCLUDE

- Reception area includes full height ceiling and feature stairs to first floor
- Board room and meeting room facilities
- Canteen facilities
- Male and female toilets on ground floor
- Disabled Access toilets on ground and first floor
- Full disabled access including lift
- All units fitted with triple plate data link to central patch panel in Reception (phone, fax and computer systems hardware not included)
- Central fire alarm system interconnected with other units in Site 4 building
- Units 6 and 7 are fitted with internal network for up to 8 work stations

